

MATHTECH ELECTRICAL LEAD SAFETY BRACKET

KEEP YOUR WORKPLACE SAFE!

SAFE - REUSABLE
SIMPLE - RELIABLE
SECURE - READY TO USE

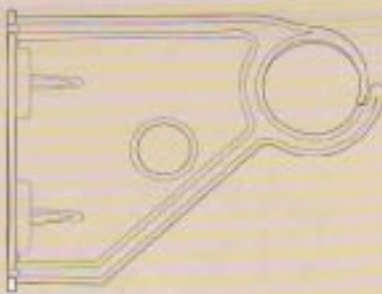
- Increases workplace safety
- keeps electrical leads elevated
- reduces tripping hazards and lead damage

The MATHTECH Safety Bracket is a new product that has been developed to assist in workplace safety. Its clever design allows ease of use with its magnetic or optional screw on fittings.

The bracket is made from strong, high visibility moulded plastic / polycarbonate and has been designed to withstand the rigours of a construction environment.

Easy to deploy, it makes compliance with OH&S guidelines almost effortless. Keeping cables tidy and aloft reduces the risk of lead damage, electrical and tripping hazards.

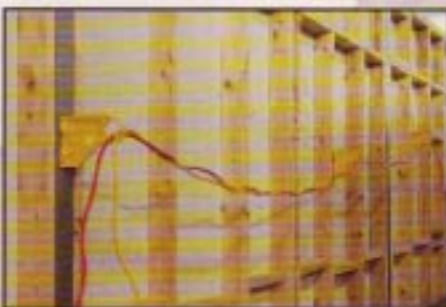
Used in conjunction with a versatile fastener, such as Powers Walldog, the brackets can be fastened to a wide variety of surfaces including steel, wood and concrete, making it ideal for use in a number of trade applications.



Magnetic
Holds firm on any magnetic attracting surface. No fixings required.



Non Magnetic
Using the anchor screws provided, the bracket is quickly and easily fixed to timber, plaster or masonry surfaces.



The Mathtec bracket in both versions holds single or multiple leads.



MAGNETIC VERSION Part No. MELB/M

The Magnetic version has two strong magnets fixed to the base which provides a positive hold on steel surfaces.



NON MAGNETIC VERSION Part No. MELB/F

Using the Powers Walldog anchors supplied, the bracket is quickly and easily fixed to timber, plaster or masonry substrates.



Available From:



V.J.P. FASTENING SYSTEMS PTY. LTD.

Head Office: 13 - 15 Marvis Street, Revesby NSW 2212

Tel: (02) 9792 3820

Fax: (02) 9792 2597

Email: sales@vjpfast.com.au

Website: www.vjpfast.com.au

1300 200 000